

Engineering Bulletin No. LA7
Lever operated switches
Single Pole 3 amp. 250Vac/dc
Double Pole 1,5amp. 250Vac/dc.

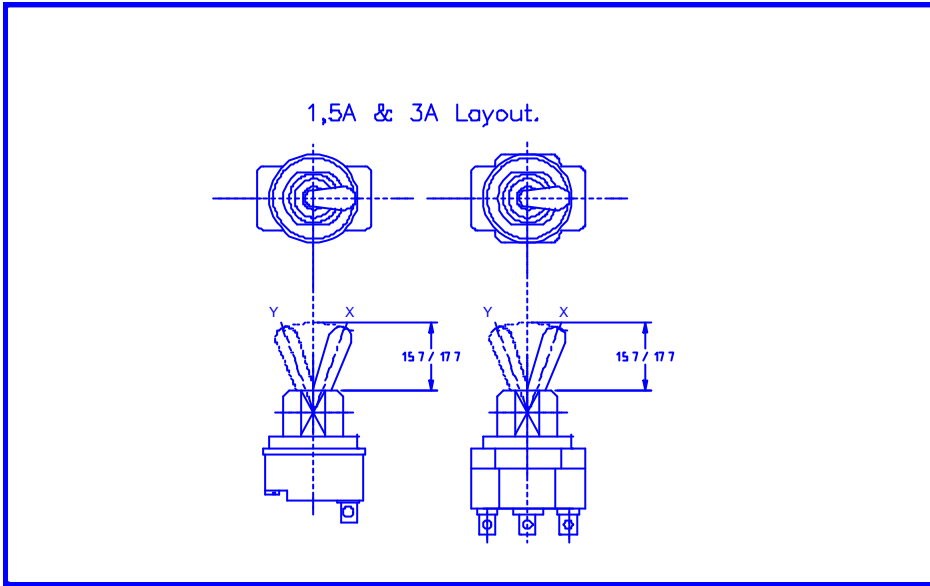
Catalogue Data

Action	Rating	Seals	Switch No.	Pattern No.	Pole (s)	Function	Bias Returns Lever from	Maximum body dimension in mms			Bush mms-maximum	
								Length	Width	Height	Height	Diam
QUICK MAKE AND QUICK BREAK	3 amps at 250V a.c. or d.c.	BARRIER and PANEL	26446	551	Single	On-None-Off	-	27,0	14,0	23,0	11,1	15,1‡
			26453	552	Single	On-None-Off	Y to X	43,3	17,1	29,0	11,1	15,1‡
			26453-2	553	Single	On-None-Off	X to Y	43,3	17,1	29,0	11,1	15,1‡
	NOT FITTED	26874	501	Single	On-None-Off	-	27,0	14,0	21,4	8,7	11,9*	
		26874-3	502	Single	On-None-Off	Y to X	43,3	17,1	29,0	8,7	11,9*	
		26874-4	503	Single	On-None-Off	X to Y	43,3	17,1	29,0	8,7	11,9*	

Action	Rating	Seals	Switch No.	Pattern No.	Pole (s)	Function	Bias Returns Lever from	Maximum body dimension in mms			Bush mms-maximum	
								Length	Width	Height	Height	Diam
QUICK MAKE AND QUICK BREAK	1,5amps at 250V a.c. or d.c.	BARRIER and PANEL	26447	554A	Double	On-None-On	-	29,4	22,6	26,2	11,1	15,1‡
			26454	555A	Double	On-None-On	X to Y	43,3	17,1	29,0	11,1	15,1‡
	NOT FITTED	26875	504A	Double	On-None-On	-	29,4	22,6	26,2	8,7	11,9*	
		26875-5	505A	Double	On-None-On	X to Y	43,3	17,1	29,0	8,7	11,9*	

‡ 15,1 dia 26 T.P.I. / BSW. Double 'D' flats.

* 11,9 dia 32 T.P.I. / BSW. Keyway 2,0 x 1,0 deep facing position Y.



General Information

These switches were developed for the Ministry of Defence primarily for use in services radio, radar and electronic equipment

The sealed types will have many applications where the exclusion of dust and moisture from equipment is of paramount importance. The method of sealing is the incorporation of a sealing gasket fitted into a recess on the bush mounting face and two annular sealing rings which fit tightly around the ball of the lever, the ball being finished to precision limits. The switch is completely sealed with respect to the panel on which it is mounted.

The mounting bush, lever and fixing nuts are made of Aluminium alloy giving it light weight, and the anodised matt black finished minimises reflection from panel or other lights.

All switches are supplied with an approved type spring locking washer.

Switches are supplied with solder lugs as standard, Ask technical sales for information.

Electrical Characteristics.

	Voltage	Current	VA	Type of load	Switch action.
Single Pole.	250 Vac/ dc	3 amp	750	Resistive	Quick make / break
Double Pole.	250 Vac/ dc	1,5 amp	375	Resistive	Quick make / break

Environmental category: 40 / 100 / 56

Proof voltage: 750 Vrms

Insulation resistance (initial): not less than 100 Megohms

Contact resistance (initial): not greater than 10 milliohms