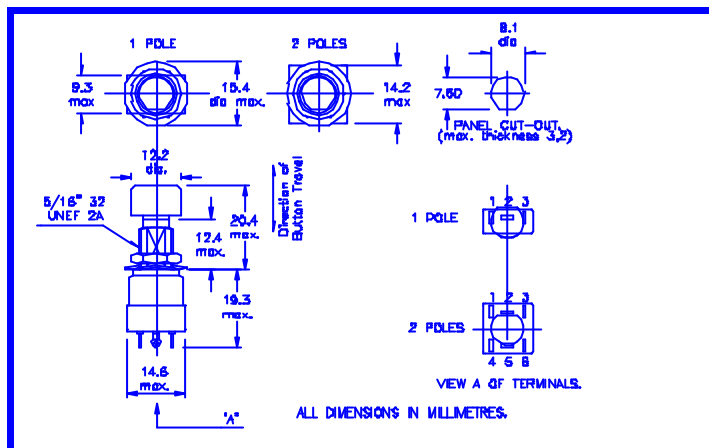


CATALOGUE DATA.

TYPE NUMBER			POLES	FINISH	FUNCTION	CONNECTIONS	
Right Angle P.C. Tags	Solder Lugs	Straight P.C. Tags				BUTTON OUT	BUTTON IN
408	608	808	SINGLE POLE	PASSIVATED	ON-ON	2-3	1-2
406	606	806		OFF-ON	OFF	1-2	
418	618	818		MATT BLACK	ON-ON	2-3	1-2
416	616	816		OFF-ON	OFF	1-2	
508	708	908	DOUBLE POLE	PASSIVATED	ON-ON	2-3 & 5-6	1-2 & 4-5
506	706	906		OFF-ON	OFF	1-2 & 4-5	
518	718	918		MATT BLACK	ON-ON	2-3 & 5-6	1-2 & 4-5
516	716	916		OFF-ON	OFF	1-2 & 4-5	

‘BUTTON IN’ IS A MOMENTARY CONTACT POSITION.



General Information

These miniature switches have been designed for light power and dry circuit applications. They are robust, highly reliable design and the mechanical linkage between the actuators and moveable contact member ensures a positive make and break action.

Contacts have a wiping action, and are gold plated for dry circuit conditions *provided that they have not previously been used or tested at currents and voltages in excess of 0.1A.6Vdc.*

Standard specification includes panel seals, lock washer and fixing nuts. These switches are also available with matt black metalwork.

The recommended method of terminal soldering is fully described in the Engineering Data Sheet LA1. Printed circuit termination is now also available on these switches.

Characteristics

Electrical.

Voltage	Current	Volt/amp	Type of load
30Vdc. max.	2 A max.	60	Resistive
125 Vrms. max.	2 A max.	250	Non-reactive
5 mVdc. min.	25 μ A min.	125 x 10 ⁻⁹	Resistive
Proof Voltage:	500 Vrms		
Insulation resistance:	Initial, greater than 100 megohms.		
Contact resistance:	Initial, not greater than 5 milliohms measured at 10m Vrms. 10mA max.		

Mechanical.

Environmental category:	40/85/21
Endurance: (minimum)	10,000 operations.
Weight:	single pole. 7.5 grms double pole. 9.0 grms
Operating / storage temperature range:	-40° to +85°C.
Sealing (max. leakage rate)	1 cm ³ /h at 100 kN/m ² to 110kN/m ²

Materials.

Contacts:	Fine silver, gold plated
Terminals:	Gold Plated Silver.
Housing bush and washer:	Stainless Steel.
Nut:	Stainless Steel.
Insulation:	Nylon filled phenolic.